

Certificate of Analysis



Client:
Modern Aminos

Laboratory:
TrustPointe Analytics LLC
1743 142nd Ave Suite 4
Dorr, MI 49323



Verify at TrustPointeLIMS.com
Key=31FGGXZDFCBA

Sample Information

Sample Name	GLP/GIP/Glucagon 50MG, 3 vials, RUSH	Client SID	Batch #: BX-P-O3C8	Published	2025-12-19 22:28
--------------------	--------------------------------------	-------------------	--------------------	------------------	------------------

Results

Sample IDs	SPL-2638-S02	SPL-2638-S01	SPL-2638
TM-1004 Assay	65.810 mg	66.290 mg	67.510 mg
TM-1004 Purity	99.579 %	99.572 %	99.540 %
TM-1004 ID by RT	1.00	1.00	1.00
TM-1004 ID by Spectral	1000	1000	1000
TM-1004 Coelution	1000	1000	1000
TM-1004 System Suit	0.6 %RSD	0.6 %RSD	0.6 %RSD

Approvals

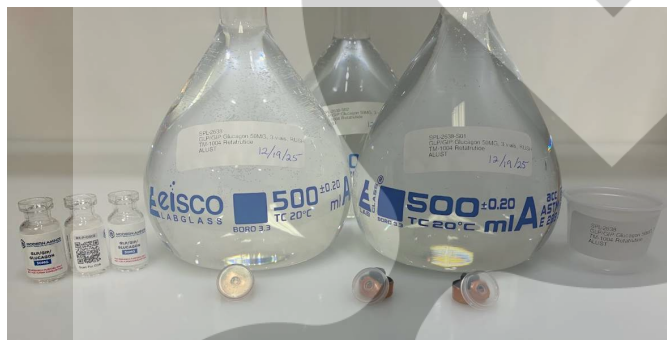
Created by

Ashlee Lust
President

Reviewed by

Joshua Lust
Managing Director

Attachments for SPL-2638



Attachment for SPL-2638
Filename: SPL-2638.png



Attachment for SPL-2638
Filename: SPL-2638_Zoom.png

Certificate of Analysis



Client:
Modern Aminos

Laboratory:
TrustPointe Analytics LLC
1743 142nd Ave Suite 4
Dorr, MI 49323



Verify at TrustPointeLIMS.com
Key=GTAMQMTK8465

Sample Information

Sample Name	GLP/GIP/Glucagon 50MG, 1 vial, ENDO	Client SID	Batch #: BX-P-O3C8	Published	2025-12-19 15:08
--------------------	-------------------------------------	-------------------	--------------------	------------------	------------------

Results

Sample IDs	
USP <85> Bacterial Endotoxin	<15.0 EU/mL
USP <85> Sample CV %	0.0 %
USP <85> Spike CV %	0.7 %
USP <85> Spike Recovery	96 %

Comments for SPL-2637

General

Original dilution 2mL; USP limit 5 EU/kg/hr

Approvals

Created by

Ashlee Lust
President

Reviewed by

Joshua Lust
Managing Director